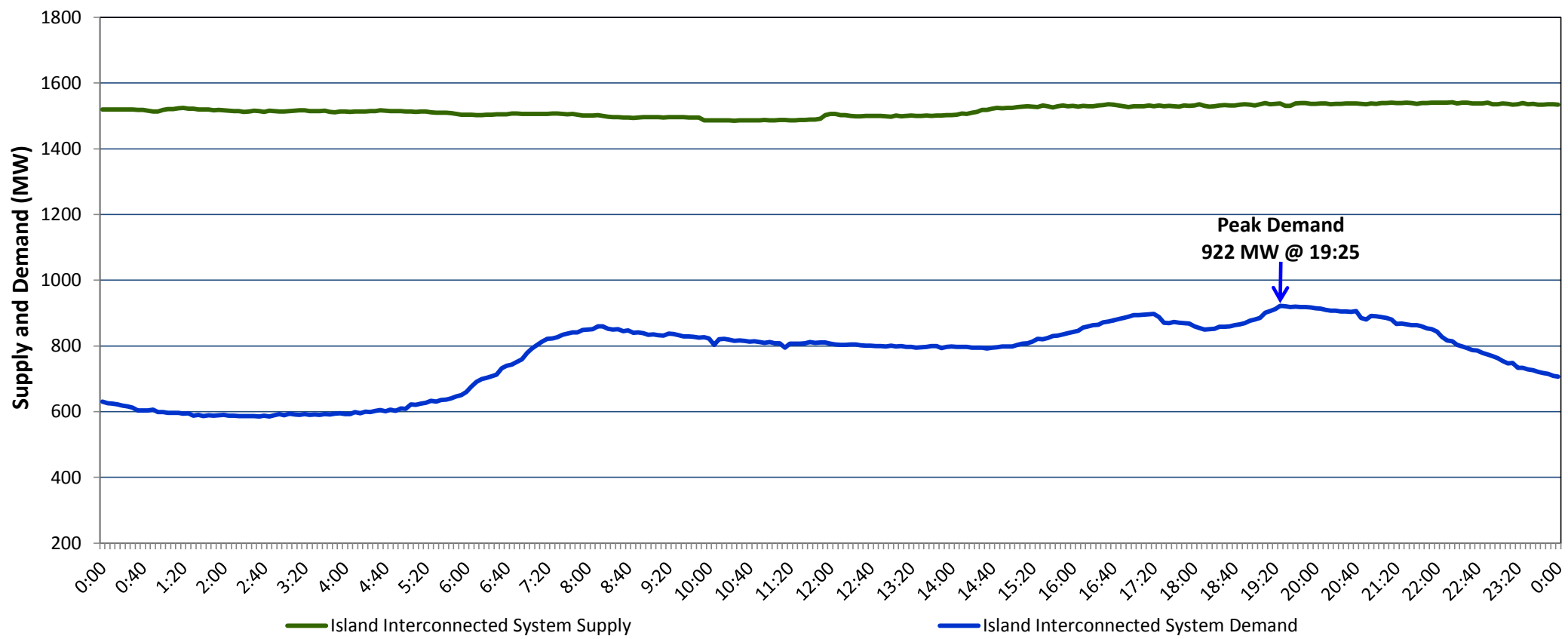


Newfoundland Labrador Hydro (NLH)
Supply and Demand Status Report Filed Tuesday, October 03, 2017

Section 1
Island Interconnected System Supply and Demand
Actual 24 Hour System Performance For Monday, October 02, 2017



Supply Notes For October 02, 2017

- 1,2
- A

As of 0827 hours, July 31, 2017, Holyrood Unit 2 unavailable due to planned outage 165 MW (170 MW).
- B

As of 1527 hours, September 17, 2017, Cat Arm Unit 1 unavailable due to planned outage (67 MW).
- C

As of 1229 hours, September 22, 2017, Stephenville Gas Turbine available at 25 MW (50 MW).
- D

As of 1619 hours, September 22, 2017, Holyrood Unit 3 removed from service for economic dispatch (150 MW).
- E

As of 1211 hours, October 01, 2017, Cat Arm Unit 2 unavailable due to planned outage (67 MW).
- F

At 0954 hours, October 02, 2017, St. Anthony Diesel Plant unavailable due to planned outage (9.7 MW).
- G

At 1154 hours, October 02, 2017, St. Anthony Diesel Plant available (9.7 MW).

Section 2
Island Interconnected Supply and Demand

Tue, Oct 03, 2017			Seven-Day Forecast	Temperature (°C)		Island System Daily Peak Demand (MW)
				Morning	Evening	
Island System Outlook ³						Forecast
Available Island System Supply: ⁵			Tuesday, October 03, 2017	6	5	975
NLH Generation: ⁴			Wednesday, October 04, 2017	7	11	955
NLH Power Purchases: ⁶			Thursday, October 05, 2017	14	13	905
Other Island Generation:			Friday, October 06, 2017	8	10	895
Current St. John's Temperature:			Saturday, October 07, 2017	8	8	920
Current St. John's Windchill:			Sunday, October 08, 2017	8	11	940
7-Day Island Peak Demand Forecast:			Monday, October 09, 2017	17	15	810

Supply Notes For October 03, 2017

- 3
- Notes:
1.

Generation outages for running and corrective maintenance are included. These are not unusual for power system operations. They generally do not impact customer supply. The power system operators schedule outages to system equipment whenever possible to coincide with periods when customer demands are low and sufficient supply reserves are available. However, from time to time equipment outages are necessary and reserves may be impacted.
2.

Due to the Island Interconnected System being isolated from the larger North American grid, when there is a sudden loss of large generating units some customer's load must be interrupted for short periods to bring generation output equal to customer demand. This automatic action of power system protection, referred to as under frequency load shedding, is necessary to ensure the integrity and reliability of system equipment. Under frequency events typically occur 5 to 8 times per year on the Island Interconnected System and the resultant customer load interruptions are generally less than 30 minutes.
3.

As of 0800 Hours.
4.

Gross output including station service at Holyrood (24.5 MW) and improved NLH hydraulic output due to water levels (35 MW).
5.

Gross output from all Island sources (including Note 4).
6.

NLH Power Purchases include: CBPP Co-Gen, Nalcor Exploits, Rattle Brook, Star Lake, Vale capacity assistance (when applicable), and Wind Generation.

Section 3
Island Peak Demand Information
Previous Day Actual Peak and Current Day Forecast Peak

Mon, Oct 02, 2017	Actual Island Peak Demand ⁸	19:25	922 MW
Tue, Oct 03, 2017	Forecast Island Peak Demand		975 MW

Notes:

8. Island Demand is supplied by NLH generation and purchases, plus generation owned and operated by Newfoundland Power and Corner Brook Pulp & Paper (Deer Lake Power, DLP).